

# SHARP®

ADVANCED SERIES DESKTOP MONOCHROME DOCUMENT SYSTEMS



**MX-B355W MX-B455W**



*"Most Reliable Monochrome  
Copier MFP Brand 2018-2021"*

The Sharp Advanced Series desktop monochrome document systems deliver leading-edge integration and powerful productivity, all in a small, compact design.

## A HIGHER BENCHMARK OF INNOVATION

advanced

The MX-B355W and MX-B455W Advanced Series desktop monochrome document systems deliver crisp, high-quality output with exceptional ease of use. These new models provide customers with an intuitive user experience and the confidence of knowing their jobs will come out right the first time, every time. Designed with high-performance features typically found on larger machines, the compact MX-B355W and MX-B455W deliver the productivity you need with the performance and reliability you want.

### Key Features

- **Ease of Use** – Sharp’s customizable touchscreen display offers a user-friendly graphical interface with a clean design, simplified Easy Modes, and integrated operation guide.
- **Integration** – Equipped with the latest version of Sharp OSA® technology for easy integration with network applications and cloud services, these models can unlock advanced capabilities to help you better manage your workflow.
- **Productivity** – Offers out-of-the-box copy, print, scan and fax capabilities, plus standard Cloud Connect features combined with wireless networking enable users to easily manage their workflow from PCs, smart phones and tablets.

The compact MX-B355W and MX-B455W Advanced Series desktop monochrome document systems offer powerful productivity features enabling users to quickly execute workflow tasks in today’s busy office environments. And with Sharp’s multi-layered Security Suite, these new models can help protect your data and personal information from the first day of operation to the time of trade-in.



*“Outstanding MFP for Mid-Size Workgroups”  
Awarded to MX-B455W*



*“Outstanding MFP for SMBs”  
Awarded to MX-B355W*

# DESIGNED TO DELIVER HIGH PRODUCTIVITY



## EASY-TO-USE

## ADVANCED INTEGRATION AND WIRELESS CAPABILITY

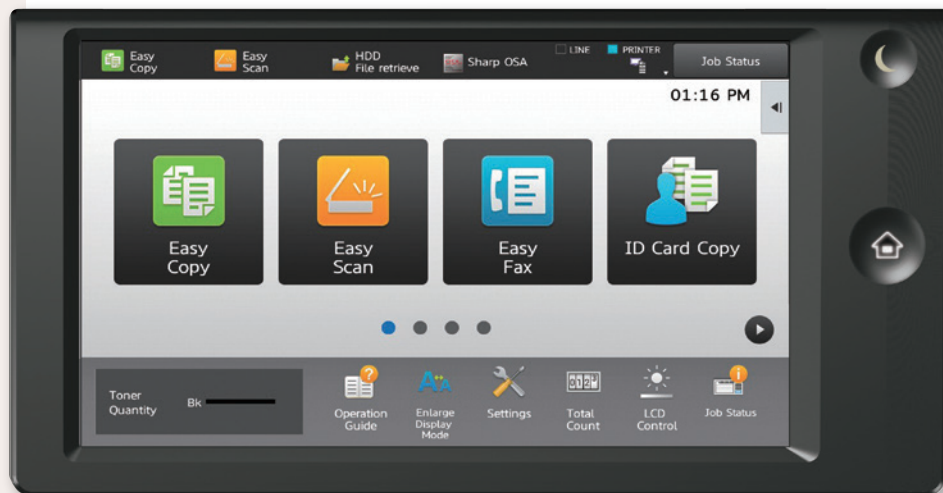
## ENHANCED PRODUCTIVITY



"PaceSetter Award in  
Ease of Use 2018-2019"

A compact design with advanced workflow features to enhance document workflow in virtually any size office.

- Standard **Copy, Print, Scan** and **Fax** capability right out of the box.
- **100-sheet duplexing document feeder** on the MX-B455W scans both sides of document in a single pass, enhancing productivity while also maintaining the integrity of your originals and minimizing wear on the feeder.
- Both models can feed **letter** size, **legal** size, **statement** size and **business card** size original documents.
- Built-in **Optical Character Recognition (OCR)** function can convert scanned documents to text-searchable PDF format, Microsoft® Office file formats, and more.
- Offers up to **five paper sources** with available 2,350-sheet maximum paper capacity.
- Standard Compact PDF feature dramatically reduces the file size of most color scanned documents, resulting in **decreased network traffic** and more efficient use of disk and cloud storage.



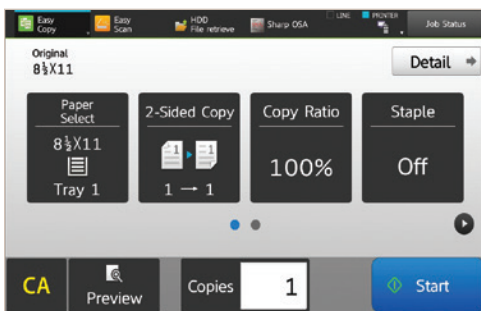
7" color touchscreen (diagonally measured).

- **Customizable touchscreen display** with a clean design enables easy access to features and functions when setting up jobs.
- Network ready **PCL® 6** and **Adobe® Postscript® 3™** printing systems deliver crisp, clear documents at up to 45 pages per minute.
- **Direct print** Microsoft Word, PowerPoint® and Excel® files from thumb drives, cloud applications, network folders and more. This function is enabled via DirectOffice™ technology.
- Easily **access popular cloud applications**, including Microsoft OneDrive® for Business, SharePoint® Online, Box.com and Google Drive™ with Sharp's Cloud Connect features.
- **Supports popular networking technologies**, enabling users to easily print files from a smart phone, a tablet, and even a Chromebook™.
- **Standard security platform** includes 256-bit encryption, up to 10-times data overwrite and an End-of-Lease feature that erases all data and personal information at trade-in.





## ADVANCED FUNCTIONALITY – COMPACT DESIGN



Easy Copy Screen offers the most commonly used settings.



Standard Copy Screen offers more advanced features.



Built-in wireless network interface for convenient scanning and printing from mobile devices.

From paper handling to networking, the MX-B355W and MX-B455W Advanced Series desktop monochrome document systems will exceed your expectations.

### *Simple and Intuitive Operation*

From basic copy functions, to complex scan jobs, the MX-B355W and MX-B455W Advanced Series desktop monochrome document systems will perform with ease and efficiency. Use one of the **Easy Modes** for fast, simple operation, with basic functions displayed in **large, clearly-labeled tiles** and keys. For more advanced features, just touch the “Details” button—it’s that easy.

### *A “Well-connected” Device*

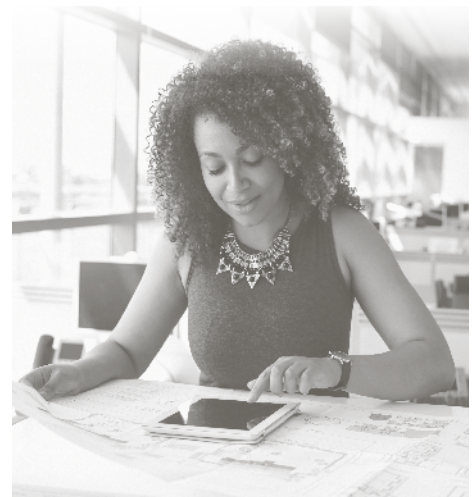
Connecting a multifunction printer (MFP) to your wireless network and accessing it from mobile devices has never been so easy with the MX-B355W/B455W standard wireless networking features. Print from or scan to popular cloud services such as **Microsoft OneDrive for Business**, **SharePoint Online**, **Box.com** and **Google Drive** with Sharp’s **Cloud Connect** features. **Single Sign-on (SSO)** support for accessing these services makes scan-to-folder and scan-to-email operations simpler than ever. Even printing from your desktop is made easier with Sharp’s **Serverless Print Release** function. **Easily send a job to one device, and print it on another** where it’s more convenient.

### *The Productivity You Need, the Performance You Want*

When it’s time to get the job done, the MX-B355W/B455W are outstanding performers. Quickly scan documents at speeds up to **110 images per minute (MX-B455W)**. Built-in optical character recognition (OCR) can convert your scanned documents into **text-searchable PDFs** or **Microsoft Office** file formats, simplifying your workflow. An available compact inner finisher with three position stapling can give your documents a professional look.



MX-B455W shown with compact inner finisher and optional paper trays.



# VERSATILE DESKTOP DOCUMENT SYSTEMS

The MX-B355W/B455W Advanced Series desktop monochrome document systems deliver the high-performance functionality you need in a space-saving, compact design that you want.

## workflow centric

### Duplexing Single Pass Feeder (DSPF) on MX-B455W

100-sheet dual head document feeder scans both sides of document in a single pass at up to 110 images per minute.

### Advanced Network Scanning

Sharp's ImageSEND™ feature provides one-touch distribution to email, fax, network folders, cloud applications and more.

### Optical Character Recognition (OCR)

Built-in OCR function can convert scanned documents to text-searchable PDF format, Microsoft Office file formats, and more.

### Compact PDF

Standard Compact PDF feature dramatically reduces the file size of most color scanned documents, resulting in decreased network traffic and more efficient use of disk and cloud storage.

### Reversing Single Pass Feeder (RSPF) on MX-B355W

50-sheet Reversing Single Pass Feeder scans documents at up to 40 images per minute.

### Flexible Document Handling

Both models can feed letter size, legal size, statement size and business card size original documents.

### Inner Finisher Option

Available compact inner finisher offers three position stapling and can hold up to 280 sheets of paper.

### Print from Mobile Devices

Supports popular networking technologies, enabling users to easily print files from smart phones, tablets, and even Chromebooks.

### Serverless Print Release

Standard Serverless Print Release feature enables users to securely print a job, and then release it from up to six Sharp document systems (including host) that are on the same network.<sup>1</sup>

### Flexible Paper Handling

Paper drawers feed up to 8½" x 14" paper and support media up to 220 gsm (80 lb. Cover). Supports up to 2,350 sheets in paper drawers and bypass tray with options.

### Enhanced Security Features

256-bit data encryption with up to 10-times data overwrite, as well as Sharp's convenient End-of-Lease feature.

### Easy-to-Use Smart Touchscreen

Tablet-style menu provides quick access to features and functions.

### High Quality Printing

True 600 x 600 dpi resolution produces razor-sharp documents. Adobe PostScript 3 drivers offer extensive job control.

### 50-Sheet Manual Bypass Tray

Convenient manual bypass tray feeds envelopes, OHP film, glossy paper and labels, as well as paper up to 80 lb. Cover stock.

### Enhanced Direct Printing

Direct print Microsoft Word, PowerPoint and Excel files from thumb drives, cloud applications, network folders and more. This is enabled via DirectOffice™ technology.

### Wired and Wireless Networking

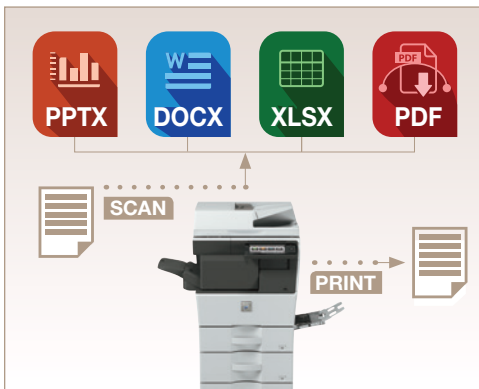
Standard Gigabit Ethernet and Wi-Fi® network capabilities offer greater flexibility.<sup>2</sup>



<sup>1</sup> Supports most Sharp document systems. For a list of supported models contact your authorized Sharp dealer.

<sup>2</sup> In Infrastructure Mode, the wireless interface is used in place of a wired connection. In Point-to-Point mode, the wireless interface can be used to connect directly to the MFP from another wireless device, such as a smartphone or tablet.

# ENHANCED COLLABORATION FOR STREAMLINED WORKFLOWS



Scan and convert documents to popular file formats seamlessly with Sharp's built-in OCR function.



Distribute, access and print documents more easily.



With Serverless Print Release you can securely print a job and release it from up to six Sharp MFPs (including host).

## Powerful document workflow solutions help you work more efficiently.

### *Simplify Managing Different File Types with Intelligent Image Processing*

Easily scan and **convert documents** to popular file formats including **Microsoft Word, PowerPoint, and Excel**, as well as a variety of **PDF formats** such as Searchable PDF, Encrypted PDF, Compact PDF and others. You can also direct print these same file types from thumb drives, cloud applications, and mobile devices. This function is enabled via **DirectOffice** technology. With this much flexibility, you can speed through your workflow tasks faster than ever!

### *Distribute, Access and Print Your Documents with Ease*

Sharp makes it easy to send documents to the destinations you need and goes beyond traditional network scanning with standard **Cloud Connect** features. Easily **scan documents** to **Microsoft OneDrive for Business, SharePoint Online, Box.com** and **Google Drive** without additional middleware. You can also print from these cloud applications. With **Single Sign-On** capability, accessing them is virtually seamless!

### *Scan and Print Files Easily from Mobile Devices*

The MX-B355W/B455W Advanced Series desktop monochrome document systems also make it easy to scan and print files from tablets and smart phones using **Sharpdesk® Mobile**, a free downloadable app available for most common mobile devices.<sup>1</sup> The MX-B355W/B455W also support popular mobile technologies such as **AirPrint®, Android™ printing framework** and **Google Cloud Print™**.<sup>2</sup> You can print locally from your device or download files from supported cloud applications. Since the Advanced Series can connect to mobile devices through a **point-to-point wireless connection**, it remains exclusive from your corporate network!

### *Flexible Printing Solutions Help Speed Up Your Office Productivity*

The MX-B355W/B455W come standard with **Adobe PostScript 3** and **PCL 6** printing systems to help you speed through all of your output needs with accuracy. To help streamline your jobs, these powerful performers include **Serverless Print Release technology**, enabling you to securely print a job and release it from up to six Sharp MFP models on your network.<sup>2</sup> And with **Google Cloud Print** web printing service, you can print from Chromebook™ notebook computers, PCs and more from virtually anywhere.

### *Simplify Complex Business Workflows*

**Sharp OSA technology** can help your business leverage the power of your network applications, back-end systems and cloud services.<sup>2</sup> Easily automate complex processes and help eliminate redundant tasks. Create your own custom integrations or take advantage of the growing portfolio of Sharp OSA applications available from Sharp Partner Program members.



<sup>1</sup> Go to [www.sharppusa.com](http://www.sharppusa.com) for a list of supported devices and operating systems.

<sup>2</sup> Some features require optional equipment and/or software/services.



# TAKING CARE OF BUSINESS SAFELY AND SECURELY

## Manage your device, help safeguard your data, help protect your business.

Businesses require that the devices on their networks are properly managed and closely monitored to ensure their data remains uncompromised. To help achieve this, the MX-B355W and MX-B455W offer powerful device management utilities, web-based customer training, and advanced, **multi-layered security features**.

With the **Sharp Remote Device Manager (SRDM)\***, administrators can take control of system features and simplify installation and management. SRDM makes it easy to view service logs, click counts, history reports and more. Its event-driven service alerts help you monitor the device and maximize uptime. The **Remote Front Panel** feature allows administrators to view and control the machine's LCD panel from a PC to troubleshoot issues and train operators remotely. Sharp also offers both **built-in** and additional **auditing hardware and software to control, access, and track usage** of each device on the network.\* And with **My Sharp™**, you get a dedicated training website customized to your model and configuration to help you understand and utilize all of the advanced features of your Sharp product, including those for security.



To help protect employees' privacy and intellectual property, the MX-B355W/B455W Advanced Series desktop monochrome document systems are armed with a variety of security measures, including features such as **data encryption, data overwrite protection, and data erase**. Multiple **security protocols** help restrict access to the device while in operation, and a convenient **End-of-Lease** feature overwrites all data at time of trade-in. **Authority Groups** help manage and restrict specific copying, printing, scanning, and fax features to safeguard data and control costs. The **Admin Audit Log** feature allows IT administrators to track activity on the device. **Confidential Printing** and **Secure Fax Release** help ensure that sensitive documents are kept safe by requiring users to enter a PIN code in order to print them.

These scalable security offerings aim to **protect your intellectual property**, preserve confidential information and help your business meet regulatory requirements including the Health Insurance Portability and Accountability Act (HIPAA) and the Family Educational Rights and Privacy Act (FERPA). For additional information visit: [www.sharppusa.com/security](http://www.sharppusa.com/security).

*\*Some features require optional equipment and/or software.*



## ENVIRONMENTAL COMMITMENT



### **An Environmentally Responsible Approach to Product Design**

Sharp is committed to environmental sustainability and corporate responsibility including planning, design, manufacturing, distribution and product end-of-life management. The MX-B355W and MX-B455W adhere to Sharp's Green Products Guidelines in pursuit of these commitments. These guidelines include designing products that consume less power, using recycled materials, reducing the amount of material used in products and packaging, and labeling the type of materials used. Sharp also aims to design products that are upgradable, easy to repair, and easy to take apart for recycling.

The MX-B355W and MX-B455W document systems are ENERGY STAR® qualified and RoHS compliant to restrict the use of hazardous substances. These products also have low TEC values. Sharp MFPs are EPEAT® registered.



### **Toner Recycling Program**

As part of our commitment to helping preserve the environment, Sharp offers our customers zero-waste-to-landfill recycling for Sharp consumables, including cartridges, bottles, toner collection containers and drum units. Sharp encourages customers to recycle their used Sharp toner cartridges in bulk by providing a pre-paid recycling kit for their return to our facility.

### **Environmental Leadership**

As a testament to our commitment to the environment, Sharp is a multi-year winner of the ENERGY STAR annual Excellence in Energy Proficiency Product Design. Sharp is also a multi-year winner of the SmartWay® Excellence Award which recognizes companies for conserving energy and lowering greenhouse gas emissions in logistics and transportation.

For more information about Sharp's environmental leadership including information about energy efficient products, electronics or toner cartridge recycling, please visit [www.sharppusa.com/environment](http://www.sharppusa.com/environment).

# MX-B355W/B455W SPECIFICATIONS

## Main Specifications

<b>MX-B355W/B455W</b>	Base models include multitasking controller, 50-sheet RSPF (MX-B355W)/100-sheet DSPF (MX-B455W), PCL 6 and Adobe PostScript® 3™ printing systems, network scanning, auto duplexing, 1 x 500-sheet paper drawer, 50-sheet bypass tray. Black developer is included.	
<b>Type</b>	Desktop monochrome multi-function document system	
<b>Display</b>	7" (diagonally measured) color dot matrix high-resolution touch panel tilting display. 1024 x 600 dots (W-SVGA)	
<b>Functions</b>	Copy, print, network print, network scan, document filing and fax	
<b>Copy System</b>	Dry electrostatic transfer/Dual component developer/Magnetic brush development/OPC drums/roller fusing/white LED exposure	
<b>Originals</b>	Sheets and bound documents	
<b>Max. Original Size</b>	8½" x 14"	
<b>Output Size</b>	Min. 5½" x 8½", Max. 8½" x 14"	
<b>Copy Speed</b>	35/45 ppm	
<b>Multiple Copy</b>	Max. 9,999 copies	
<b>First Copy Time (in seconds)<sup>2</sup></b>	<b>MX-B355W</b>	<b>MX-B455W</b>
	Platen Glass	5.3
	Doc. Feeder	7.3
		3.7
		5.5
<b>Warm Up Time</b>	30 seconds (from main switch on), 20 seconds (from power button on)	
<b>Magnification</b>	25% to 400% in 1% increments (with document feeder 25% - 200%)	
<b>Original Feed</b>	50-sheet RSPF (MX-B355W), 100-sheet DSPF (MX-B455W)	
<b>Scan Speed</b>	MX-B355W: up to 40 ipm MX-B455W: up to 110 ipm	
<b>Original Sizes</b>	5½" x 8½", 8½" x 11", 8½" x 14", 2" x 3½" business card	
<b>Paper Capacity</b>	Standard: 550 Sheets/Maximum: 2,350 Sheets	
<b>Paper Feed System</b>	Standard: (1) 500-sheet paper drawer (letter/statement size) and 50-sheet bypass tray (letter/legal/statement/envelope size). Optional: up to 3 additional 600-sheet paper drawers (letter/legal/statement).	
<b>Paper Weights and Types</b>	Paper drawers: 16 lb. bond to 28 lb. bond. Other paper types include plain, pre-printed, recycled, pre-punched, letterhead and color paper. Bypass tray: 16-28 lb. bond (plain paper), 13-16 lb. bond (thin paper), 28 lb. bond-80 lb. cover (heavy paper), 20-24 lb. bond (Monarch/Com-10 envelope). Also label paper, gloss paper, pre-printed, recycled, pre-punched, letterhead, color paper and OHP film.	
<b>Duplexing</b>	Standard automatic duplex copying and printing	
<b>CPU</b>	Up to 1.4 GHz multi-processor design	
<b>Interface</b>	RJ-45 Ethernet (10/100/1000 Base-T), USB 2.0: 2 host ports (front and rear), 1 device port (rear), Wireless 802.11 b/g/n	
<b>Memory</b>	Standard 5 GB copy/print (shared)	
<b>Hard Disk Drive</b>	500 GB	
<b>Copy Resolution</b>	Up to 600 x 600 dpi	
<b>Exposure Control</b>	Modes: Automatic, Text, Text/Photo, Text/Printed-Photo, Printed-Photo, Photo, Map, Pale-Color Document. Settings: Auto or 9 step manual	
<b>Halftone</b>	256 gradations/2 levels (monochrome)	
<b>Copy Features</b>	Scan-Once Print-Many, electronic sorting, Auto Paper Selection (APS), Auto Magnification Selection (AMS), Auto Tray Switching (ATS), black-white reversal, blank page skip, card shot, center erase, centering, cover pages, edge erase, image edit, image preview, insert pages, job build, job programs, margin shift, mirror image, mixed size original, original count, pamphlet style, proof copy, repeat layout, stamp, stamp custom image, suppress background, toner save mode, transparency inserts, watermark, 2-in-1 / 4-in-1 / 8-in-1 multi shot	
<b>Account Control</b>	Up to 1,000 users. Supports user authentication via user-number, local login name/password, LDAP or Active Directory® for all modes	
<b>Output Tray Capacity</b>	Center Exit Tray (Main): 280 sheets (face down) Inner Finisher: 280 sheets (face down)	
<b>Cloud Supported Services</b>	Google Cloud Print, Google Drive, Gmail, OneDrive for Business, SharePoint Online, Exchange Online, Box.com	
<b>Network Protocols</b>	TCP/IP (IPv4, IPv6, IPsec), HTTP/HTTPS, IPP/IPP-SSL, FTP/FTPS, SNMPv3, SMTP/SMTP-SSL, POP3/POP3-SSL, LDAP/LDAP-SSL, 802.1x for Windows and Unix.	

## Main Specifications (continued)

<b>Network and Data Security</b>	Includes IP/MAC address filtering, protocol filtering, port control, TLS Encryption, Kerberos, Active Directory integration, AES 256 bit data encryption, data overwrite (up to 10 times), US Department of Defense data wipe standard DoD 5220.22-M and End-of-Lease feature	
<b>Firmware Management</b>	Flash ROM with local (USB), network update capability and firmware update 1 to N with SRDM (Sharp Remote Device Manager)	
<b>Device Setup</b>	Web-based management/cloning with user/administrator level login	
<b>Service/Functions</b>	Remote Front Panel, remote access to service logs and click counts	
<b>Accessibility Features</b>	Free stop tilting front panel, adjustment of key touch sound and speed, concave key, document feeder free stop, job programs, remote front panel, universal grip for paper trays, and disable screen timeout	
<b>Environmental Standards</b>	International ENERGY STAR Program Ver. 2.0, European RoHS, Blue Angel (RAL-UZ205)	
<b>Power</b>	AC 110-127 VAC, 60 HZ, 15 A Receptacle	
<b>Power Consumption</b>	1.44 kW or less	
<b>Weight</b>	Approx. 69 lbs.	
<b>Dimensions</b>	Approx. 19-3/8" (w) x 20-3/8" (d) 25-1/8" (h)	
<b>Network Printing System</b>	Standard PCL compatible 6, Adobe PostScript 3	
<b>Resolution</b>	600 x 600 dpi	
<b>Print Speed</b>	35/45 ppm (8½" x 11")	
<b>Print Drivers</b>	Windows 7, Windows 8.1, Windows 10, Windows Server 2008, Windows Server 2008 R2, Windows Server 2012, Windows Server 2016, Windows PPD, MAC OS X® (including 10.6 to 10.12), all MAC PPD, Linux® PPD	
<b>Mobile Printing</b>	AirPrint, Android printing framework (Sharp Print Service Plugin), Sharpdesk Mobile <sup>3</sup>	
<b>Print Features</b>	Auto configuration, serverless print release, bar code font printing, carbon copy print, chapter inserts, confidential print, custom image registration, different cover page/last page/other page, document control, document filing, duplex printing, electronic sorting, form overlay, hidden pattern print, image rotation, image stamp, image type, job retention, layout print, margin shift, network tandem print, N-up printing, page interleave, pamphlet style, proof print, print and send, stapling, toner save mode, transparency inserts, tray status, user authentication, watermarks, zoom print. <sup>1</sup>	
<b>Direct Printing</b>	File Types: TIFF, JPEG, PCL, PRN, TXT, PDF, Compact PDF, Encrypted PDF, PostScript, DOCX, XLSX, PPTX, and PNG. Methods: FTP, SMB, Web page, Email and USB memory	
<b>Resident Fonts</b>	80 outline fonts (PCL), 139 fonts (PS)	
<b>Operating Systems and Environments</b>	Windows 7, Windows 8.1, Windows 10, Windows Server® 2008, Windows Server 2008 R2, Windows Server 2012, Windows Server 2016, Mac OS X 10.6-10.12, UNIX®, Linux®, Citrix® (XenApp 5.0-7.6), Windows Remote Desktop Services, SAP device types <sup>1</sup>	
<b>Printing Protocols</b>	LPR, IPP, IPPS, PAP, Raw TCP (port 9100), FTP, POP3, HTTP, LPD and LPR for Unix	
<b>Network Scanning System</b>	Standard: Color, monochrome, grayscale	
<b>Scan Modes</b>	Standard: Color, monochrome, grayscale	
<b>Max. Original Size</b>	8½" x 14"	
<b>Optical Resolution</b>	600 dpi	
<b>Output Modes</b>	600 dpi, 400 dpi, 300 dpi, 200 dpi, 150 dpi, 100 dpi	
<b>Image Compression</b>	Monochrome Scanning: Uncompressed, G3 (MH), G4 (MR/MMR) Color/Grayscale: JPEG (high, middle, low) Internet Fax mode: MH/MMR (option) <sup>1</sup>	
<b>Image Formats</b>	Monochrome: TIFF, PDF, PDF/A, Encrypted PDF, XPS, Searchable PDF, DOCX, XLSX, PPTX, TXT, and RTF. Color/Grayscale: TIFF, JPEG, PDF, PDF/A, Compact PDF, Encrypted PDF, XPS, Searchable PDF, DOCX, XLSX, PPTX, TXT, and RTF. Internet Fax: TIFF-FX, TIFF-F, TIFF-S <sup>1</sup>	
<b>Scan Destinations</b>	Email, Desktop, FTP, Folder (SMB), USB, Super G3 fax, Internet fax (option)	

## Network Scanning System (continued)

<b>One-touch Destinations</b>	Up to 2,000 (combined scan destinations)
<b>Group Destinations</b>	Up to 500
<b>Programs</b>	48 (combined)
<b>Max. Jobs</b>	Up to 100
<b>Enhanced Email Integration</b>	Standard Gmail connector, standard Exchange connector (on-premise and online)
<b>Scanning Protocols</b>	HTTP/HTTPS, FTP/FTPS, SMTP/SMTP-SSL/ESMTP, POP3, LDAP, S/MIME
<b>Software</b>	Sharpdesk® desktop personal document management software (1 user license included), Sharpdesk Mobile (download)

## Super G3 Facsimile Function

<b>Communication Line</b>	Public Switched Telephone Network (PSTN)
<b>Transmission Mode</b>	Super G3, G3
<b>Modem Speed</b>	Maximum 33.6 KBPS with auto fallback
<b>Compression</b>	JBIG, MMR, MR, MH
<b>Scanning Method</b>	Sheet fed or manual feed from platen glass
<b>Transmit Resolution</b>	400 x 400 dpi (ultra-fine), 200 x 400 dpi (super-fine), 200 x 200 dpi (fine), 200 x 100 (standard)
<b>Halftones</b>	256 levels
<b>Transmit Speed</b>	Approx. 2 seconds per page in Super G3 mode
<b>Auto Dialing</b>	Up to 1000 destinations (combined)
<b>Group Dialing</b>	Up to 500 groups
<b>Inbound Fax Routing</b>	To email address, FTP or SMB using Transmit Terminal Identification (TTI), also Document Administration function can send blind copy of transmissions and receptions to an administrator email address, FTP or SMB location.
<b>Max. Original Length</b>	Up to 19.5"
<b>Programs</b>	48 (combined)
<b>Memory</b>	1 GB (shared)
<b>Features</b>	Transaction Reports, Activity Reports, PC Fax, F-Code communication, Memory Transmission, Quick On-line Transmission, Inbound Fax Routing, Anti-junk Fax Reception, Secure Fax Release, Out-of-Paper Memory Reception, Auto Redial, Auto Exposure, Chain Dialing, Polling Reception, Duplex Reception and ITU-T.37 Internet Fax Option.

## Optional Equipment

<b>MX-DS22</b>	High Stand
<b>MX-DS23</b>	Low Stand
<b>MX-CS14</b>	600-sheet Paper Feed Unit
<b>MX-FN32</b>	30-sheet Staple Inner Finisher
<b>MX-SCX1</b>	Staple Cartridge for MX-FN32
<b>MX-FWX1L</b>	Internet Fax Kit
<b>MX-PF10</b>	Bar Code Font Kit
<b>MX-AMX1L</b>	Application Integration Module
<b>DVENDFS</b>	Generic Vendor Interface Kit
<b>MX-FR59U</b>	Commercial Data Security Kit (not available at time of launch)

## Supplies

<b>MX-B45NT</b>	Toner Cartridge
<b>MX-B45NV</b>	Developer
<b>MX-B45DU</b>	Drum

<sup>1</sup> Some features require optional equipment. See your local dealer.

<sup>2</sup> May vary depending on product configuration, machine settings and operating and/or environmental conditions.

<sup>3</sup> Go to [www.sharpsusa.com](http://www.sharpsusa.com) for a list of supported devices and operating systems.



SHARP ELECTRONICS CORPORATION  
100 Paragon Drive, Montvale, NJ 07645  
1-800-BE-SHARP • [www.sharpsusa.com](http://www.sharpsusa.com)

Design and specifications subject to change without notice. Sharp, Sharp OSA, Sharpdesk, My Sharp and all related trademarks are trademarks or registered trademarks of Sharp Corporation and/or its affiliated companies. Windows, Windows Server, Excel, PowerPoint, OneDrive and Share Point are registered trademarks of Microsoft Corporation. Android, Google Drive, Google Cloud Print and Chromebook are trademarks of Google Inc. AirPrint is a registered trademark of Apple Inc. Adobe and PostScript are registered trademarks of Adobe Systems Inc. DirectOffice is a trademark of CSR Imaging US, LP, registered in the United States and other countries, used with permission. Wi-Fi is a registered trademark of the Wi-Fi Alliance. BLI Reliability award based on devices tested from January 2012 through May 2018. All other trademarks are the property of their respective owners.